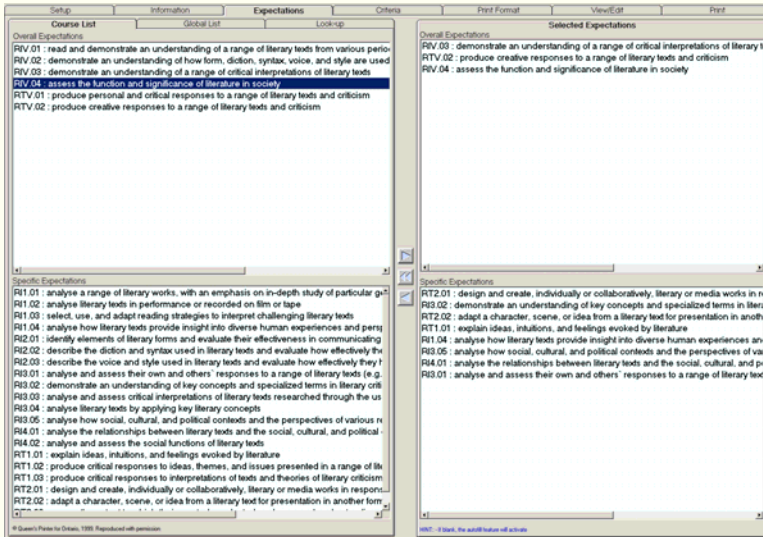


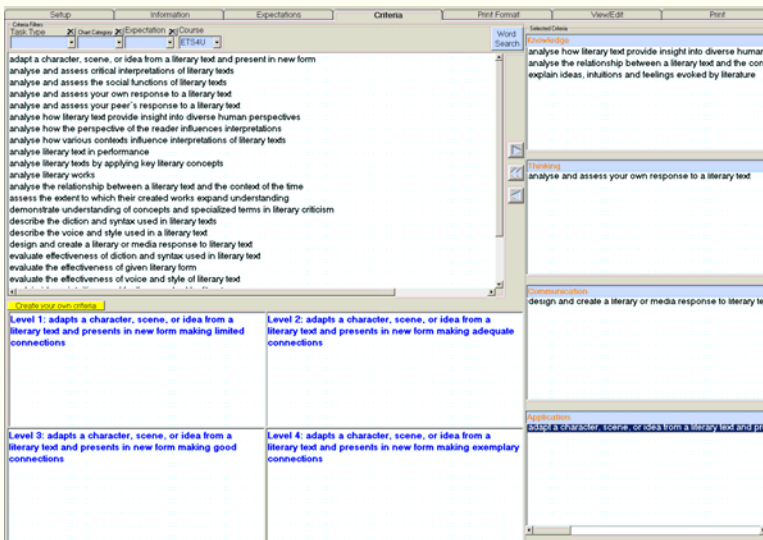


The Rubric Builder is a simple, powerful tool to help teachers create meaningful, high quality assessments. With thousands of linked criteria to choose from, it is so fast and simple that you will be creating rubrics in minutes.



Expectations

This screen allows you to choose which Ontario Ministry of Education curriculum expectations you wish to use in your rubric. From the list of course expectations, double click or use the arrows to add the selected items to your rubric. You also have the ability to search for and select expectations from other courses. This is very useful on those occasions when you have interdisciplinary assignments.



Criteria

On this screen you will select the criteria that will be used in the assessment. To make it easier to find the desired criteria you can limit the list by task or selected expectations. Select criteria by dragging the text into one of four category boxes: Knowledge, Thinking, Communication or Application. You can also click on the arrow to have the criteria added to the most appropriate box. This screen will also allow you to create your own criteria and level descriptors for your rubric.

- Elementary version, grades 1 - 8
- Secondary version, grades 9 - 12
- <http://www.rubricbuilder.on.ca>
- sales@rubricbuilder.on.ca
- (877)-214-9302

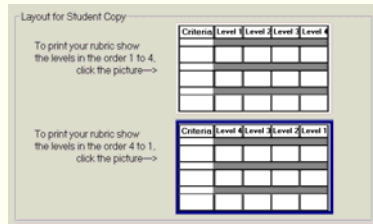


Criteria	Level 4	Level 3	Level 2	Level 1
Knowledge				
analyse how literary text provide insight into diverse human perspectives	analysis of how literary text provide insight into diverse human perspectives demonstrates thorough understanding	analysis of how literary text provide insight into diverse human perspectives demonstrates considerable understanding	analysis of how literary text provide insight into diverse human perspectives demonstrates some understanding	analysis of how literary text provide insight into diverse human perspectives demonstrates limited understanding
analyse the relationship between a literary text and the context of the time	analysis of the relationship between a literary text and the context of the time demonstrates thorough knowledge	analysis of the relationship between a literary text and the context of the time demonstrates considerable knowledge	analysis of the relationship between a literary text and the context of the time demonstrates some knowledge	analysis of the relationship between a literary text and the context of the time demonstrates limited knowledge
explain ideas, intuitions and feelings evoked by literature	explanation of ideas, intuitions and feelings evoked by literature demonstrates a high degree of critical thought	explanation of ideas, intuitions and feelings evoked by literature demonstrates considerable critical thought	explanation of ideas, intuitions and feelings evoked by literature demonstrates some critical thought	explanation of ideas, intuition feelings evoked by literature demonstrates limited critical thought
demonstrate understanding of concepts and specialized terms in literary criticism	demonstrates thorough understanding of concepts and specialized terms in literary criticism	demonstrates considerable understanding of concepts and specialized terms in literary criticism	demonstrates some understanding of concepts and specialized terms in literary criticism	demonstrates limited understanding of concepts and specialized terms in literary criticism
Thinking				
analyse and assess your own response to a literary text	analysis and assessment of own response to a literary text demonstrates thorough objectivity	analysis and assessment of own response to a literary text demonstrates considerable objectivity	analysis and assessment of own response to a literary text demonstrates some objectivity	analysis and assessment of own response to a literary text demonstrates limited objectivity
produce critical responses to interpretations of literary texts	production of critical responses to interpretations of literary texts demonstrates thorough comprehension	production of critical responses to interpretations of literary texts demonstrates considerable comprehension	production of critical responses to interpretations of literary texts demonstrates some comprehension	production of critical responses to interpretations of literary texts demonstrates limited comprehension
produce critical responses to ideas, themes, and issues from literary text	production of critical responses to ideas, themes, and issues from literary text demonstrates thorough comprehension	production of critical responses to ideas, themes, and issues from literary text demonstrates considerable comprehension	production of critical responses to ideas, themes, and issues from literary text demonstrates some comprehension	production of critical responses to ideas, themes, and issues from literary text demonstrates limited comprehension
Communication				
design and create a literary or media response to literary text	designs and creates a literary or media response to literary text with thorough content	designs and creates a literary or media response to literary text with some content	designs and creates a literary or media response to literary text with limited content	designs and creates a literary or media response to literary text with limited content
Application				
adapt a character, scene, or idea from a literary text and present in new form	adapts a character, scene, or idea from a literary text and presents in new form making exemplary connections	adapts a character, scene, or idea from a literary text and presents in new form making good connections	adapts a character, scene, or idea from a literary text and presents in new form making adequate connections	adapts a character, scene, or idea from a literary text and presents in new form making limited connections

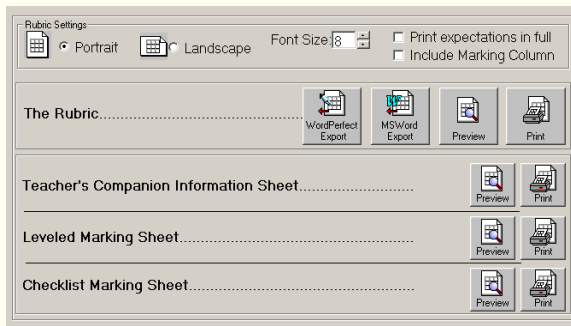
View / Edit

This screen allows you to view and edit the rubric before it is printed. You may double-click on any of the squares to begin editing the text inside. This is the feature which will allow you to have complete control over how the rubric is worded. All of the criteria and the level descriptors are completely editable to ensure that you get the exact phrasing that is right for your rubric.

Layout / Print



These final 2 screens will allow you to preview, print and export your completed rubric. There are three other forms which may be printed if you find them relevant to your particular rubric. The first is a “Teacher’s Companion Information Sheet” which provides a useful overview of the expectations and criteria. The second is a “Leveled Marking Sheet” which is useful for marking presentations. The final document is a “Checklist Marking Sheet” which is useful when the criteria do not lend themselves to 4 levels of performance.



Buy with Confidence:

- Hundreds of schools and thousands of teachers are already using *The Rubric Builder*.
- Site licenses permit the entire faculty to use the software at school and at home.
- Receive unlimited e-mail and telephone support for one year.
- Available since 1999; it’s time tested.